

DUST EXTRACTION SYSTEM NE J 350



TECHNICAL SPECIFICATION

| | |
|--|---|
| Certified according to BGHM, Germany | CE |
| Energy Efficiency Class Motor | IE5 |
| Power Consumption (kW) | 11 |
| Current Consumption (A) | 19 |
| Filter Area (m ²) | 38 |
| Dimensions D x W x H (mm) | 1060 x 3981 x 2174 |
| Bin Volume (Wood Dust) (l) | 3x 160 |
| Weight (kg) | 1300 |
| Ø Suction Connection (mm) | 350 |
| Operating Air Volume (m ³ /h) | 9500 |
| Air Volume maximal nominal (m ³ /h) | 8000 6925 |
| Negative Pressure related to nominal Air Vol. (PA) | 2750 |
| Total static Negative Pressure at Ventilator (PA) | 3400 |
| Maximum Noise Level according to MRL* (dB (A)) | 72 - 74 |
| Filter Regeneration | Compressed-Air Pulse (Jet) |
| Extinguishing Device | Certified Fire Protection Flap (Hermetic Oxygen Seal) |
| Operation Mode | Permanent Mode |
| Current Supply Voltage | Three Phase Current 400 V 50 Hz |

* = Open-air noise level according to German machinery directive with a distance of 1.0 m at a height of 1.6 m. Measurement according to EN-ISO 11201, measured at nominal air volume without material conveyance.

Ambient Conditions: 5°C < t < 40°C, measurements in accordance with DIN standard 8416 (20 m/sec.).

DESCRIPTION

The NE-series industrial dedusters are your solution for the energy-efficient extraction of wood dust and chips in joineries and carpentry shops. These economical dedusting systems promote a smooth production process, protect your machines and the health of your employees.

NE-series dust removers comply with all current requirements for dedusting equipment and are approved for internal installation in workshops. A powerful deduster is ideal for use in the woodworking industry, as dust extractors for individual machines, small groups of machines or stand-alone solutions (where special extraction requirements exist). They can also be used for related materials, such as plastic, leather, paper or other industrial dusts.

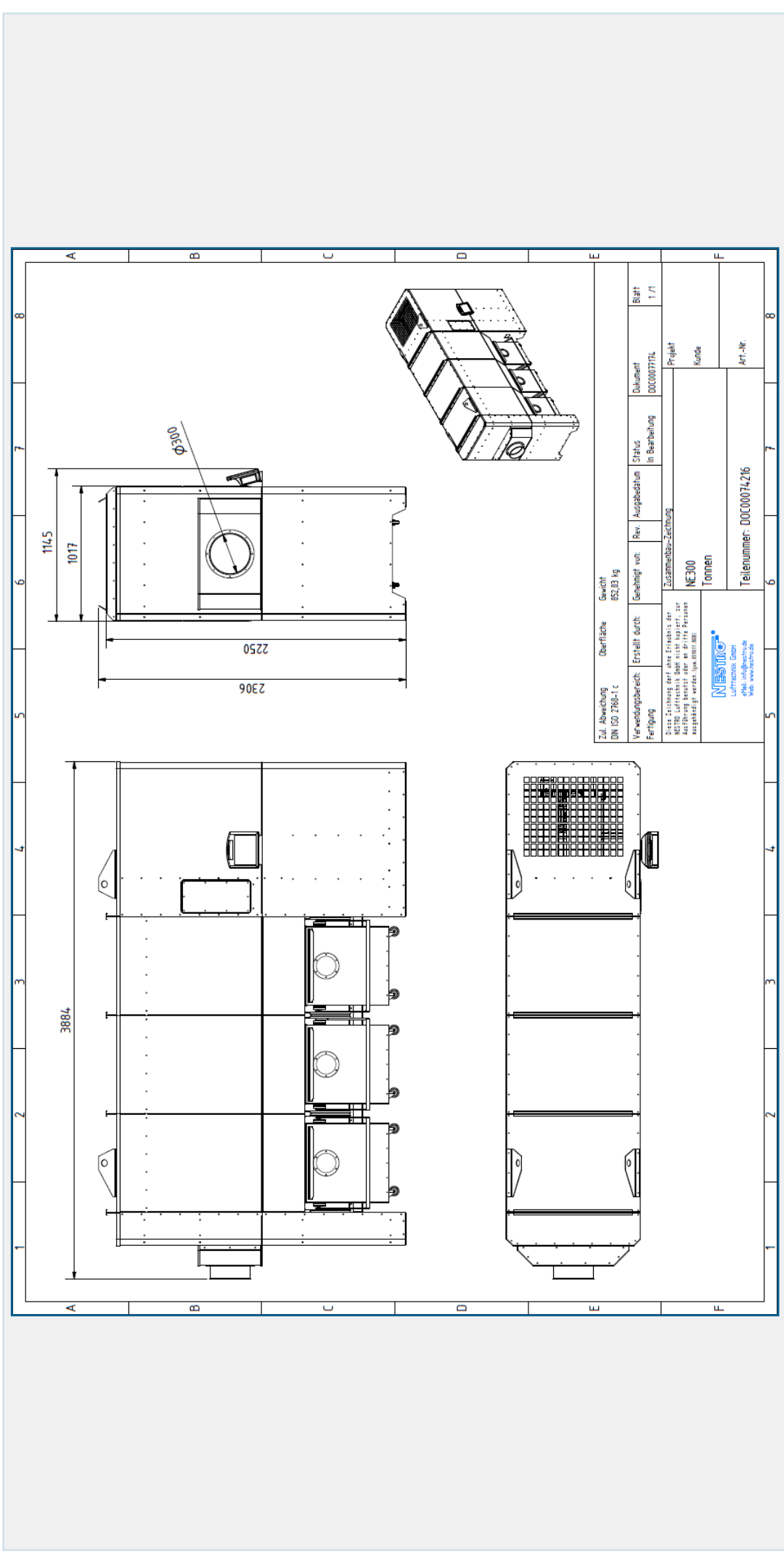
Deduster NE J 350 is a vacuum filter with a fan installed on the clean gas side and outstanding efficiency. All dedusters are equipped with automatic filter regeneration and, from NE 250, with an automatic extinguishing system. In automatic mode, the deduster switches on and off in parallel with the machines that require extraction.

ACCESSORIES

- Briquetting press available to replace bins, perfect system integration for automatic operation.
- Rotary gate valve available to replace bins, perfect system integration.
- Silencer, effect approx. -10 dB(A).
- Dust bulkhead.
- Ultrasonic sensor level control.
- Set of PE bags.

AES OFFER INSTALLATION AND SERVICE SUPPORT FOR ALL EQUIPMENT

DUST EXTRACTION SYSTEM NE J 350



AES OFFER INSTALLATION AND SERVICE SUPPORT FOR ALL EQUIPMENT