

DUST EXTRACTION SYSTEM NE J 250



DESCRIPTION

The NE-series industrial dedusters are your solution for the energy-efficient extraction of wood dust and chips in joineries and carpentry shops. These economical dedusting systems promote a smooth production process, protect your machines and the health of your employees. The units are developed especially for small and middle size enterprises with a total air requirement of 1,780 up to 8,000 m³/h or for bigger companies as a supplement of an existing central dust extraction system.

NE-series dust removers comply with all current requirements for dedusting equipment and are approved for internal installation in workshops. A powerful deduster is ideal for use in the woodworking industry, as dust extractors for individual machines, small groups of machines or stand-alone solutions (where special extraction requirements exist). They can also be used for related materials, such as plastic, leather, paper or other industrial dusts.

Deduster NE J 250 is a vacuum filter with a fan installed on the clean gas side and outstanding efficiency. All dedusters are equipped with automatic filter regeneration and, from NE 250, with an automatic extinguishing system. In automatic mode, the deduster switches on and off in parallel with the machines that require extraction.

TECHNICAL SPECIFICATION

Certified according to BGHM, Germany	H3 / CE / GS
Energy Efficiency Class Motor	IE5
Power Consumption (kW)	5.5
Current Consumption (A)	11.5
Filter Area (m ²)	22.4
Dimensions D x W x H (mm)	1020 x 3140 x 2250
Bin Volume (Wood Dust) (l)	2x 160
Weight (kg)	980
Ø Suction Connection (mm)	250
Operating Air Volume (m ³ /h)	5600
Air Volume maximal nominal (m ³ /h)	5050 3530
Negative Pressure related to nominal Air Vol. (PA)	2500
Total static Negative Pressure at Ventilator (PA)	2960
Maximum Noise Level according to MRL* (dB (A))	72 - 74
Filter Regeneration	Compressed-Air Pulse (Jet)
Extinguishing Device	Certified Fire Protection Flap (Hermetic Oxygen Seal)
Operation Mode	Permanent Mode
Current Supply Voltage	Three Phase Current 400 V 50 Hz

* = Open-air noise level according to German machinery directive with a distance of 1.0 m at a height of 1.6 m. Measurement according to EN-ISO 11201, measured at nominal air volume without material conveyance.

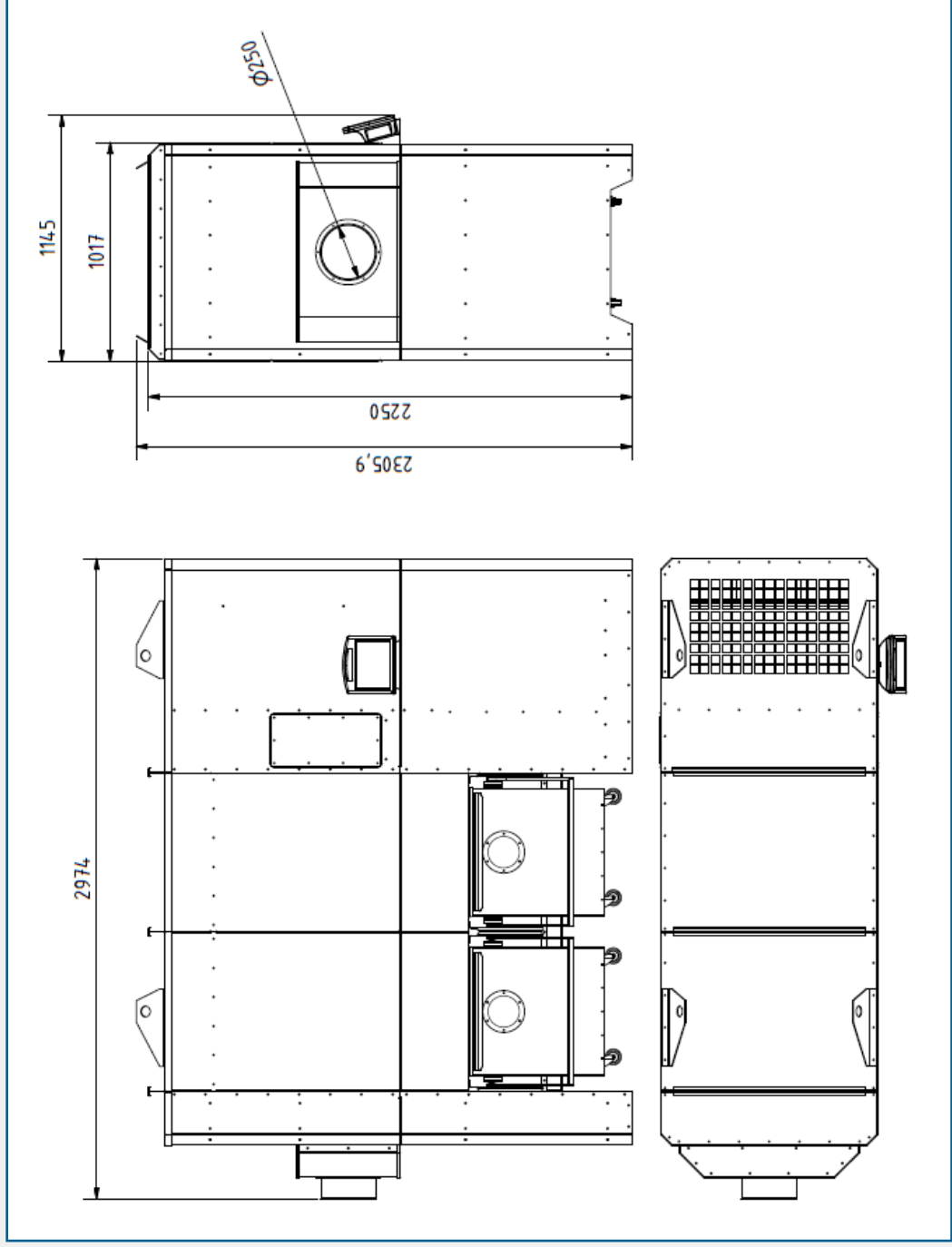
Ambient Conditions: 5°C < t < 40°C, measurements in accordance with DIN standard 8416 (20 m/sec.).

ACCESSORIES

- Briquetting press available to replace bins, perfect system integration for automatic operation.
- Rotary gate valve available to replace bins, perfect system integration.
- Silencer, effect approx. -10 dB(A).
- Dust bulkhead.
- Ultrasonic sensor level control.
- Set of PE bags.

AES OFFER INSTALLATION AND SERVICE SUPPORT FOR ALL EQUIPMENT

DUST EXTRACTION SYSTEM NE J 250



AES OFFER INSTALLATION AND SERVICE SUPPORT FOR ALL EQUIPMENT